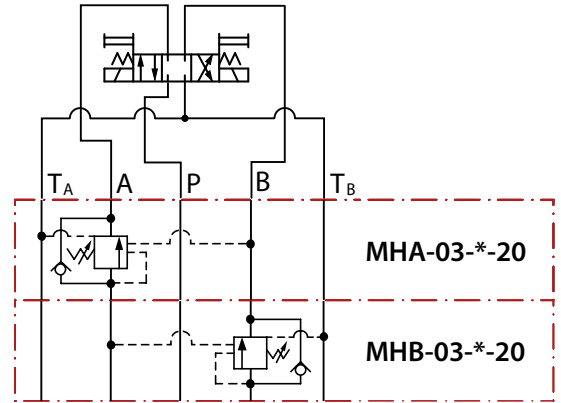
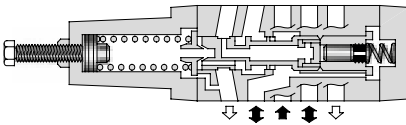


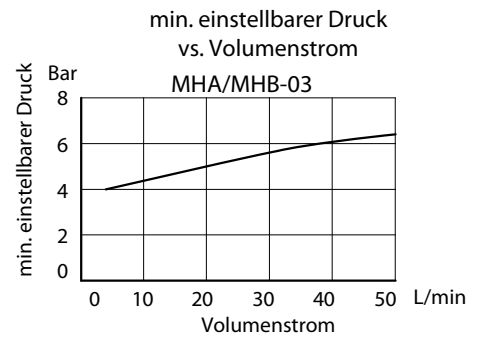
Senkbremsventil direkt gesteuert in Anschluss A / B

Cetop 05 - NG10

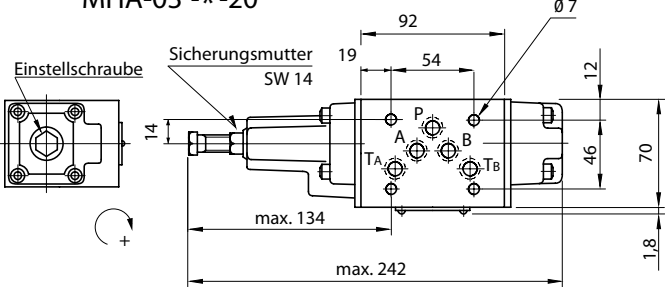


Der minimal einzustellende Druck berechnet sich aus dem Wert aus dem Diagramm "Min. einstellbarer Druck vs. Volumenstrom" plus dem Staudruck in T, aller verbauten Zwischenplatten und Ventile der betreffenden Sektion.

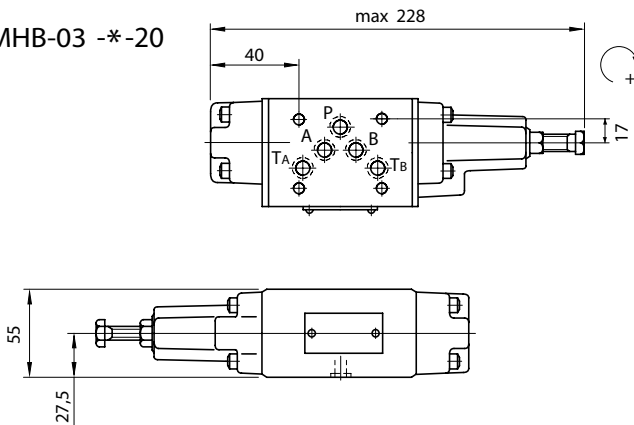
Bestell-Nr.	Bezeichnung	Arbeitsleitung	Einstellbereich	Max. Arbeitsdruck
262Y-035-01200	MHA-03-N-20	A	5 - 18bar	350bar
262Y-035-01250	MHA-03-A-20		18 - 35bar	
262Y-035-01300	MHA-03-B-20		35 - 70bar	
262Y-035-01350	MHA-03-C-20		70 - 140bar	
262Y-035-01400	MHB-03-N-20	B	5 - 18bar	
262Y-035-01450	MHB-03-A-20		18 - 35bar	
262Y-035-01500	MHB-03-B-20		35 - 70bar	
262Y-035-01550	MHB-03-C-20		70 - 140bar	



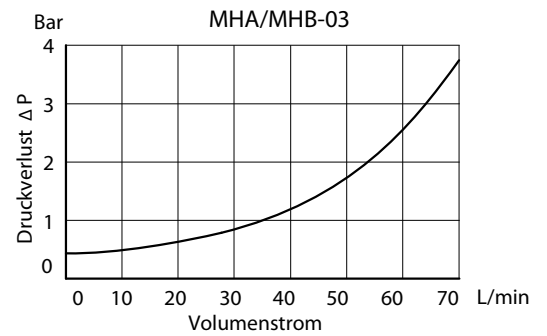
MHA-03-*-20



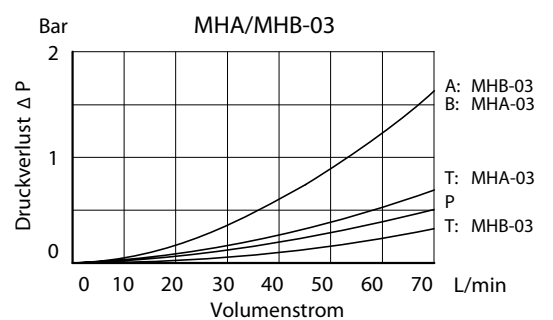
MHB-03-*-20

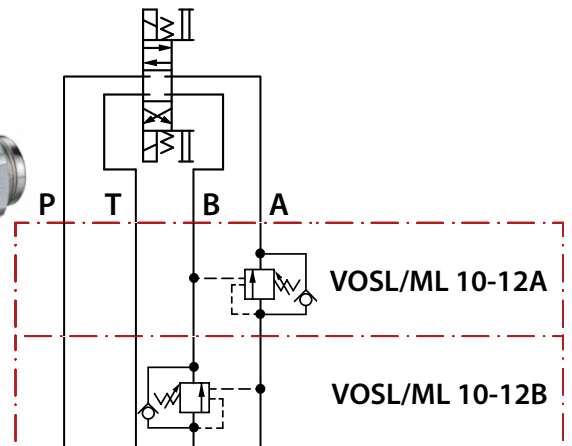


Druckverlust beim Überströmen des RSV vs. Volumenstrom

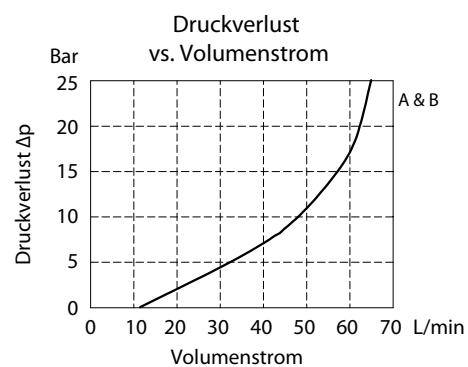
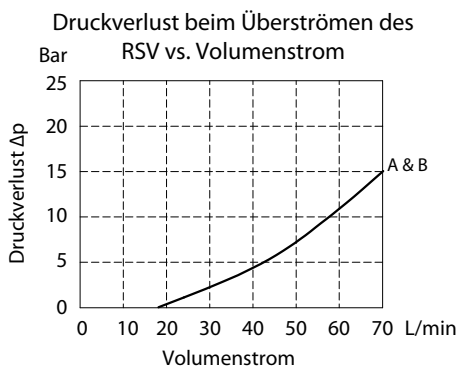
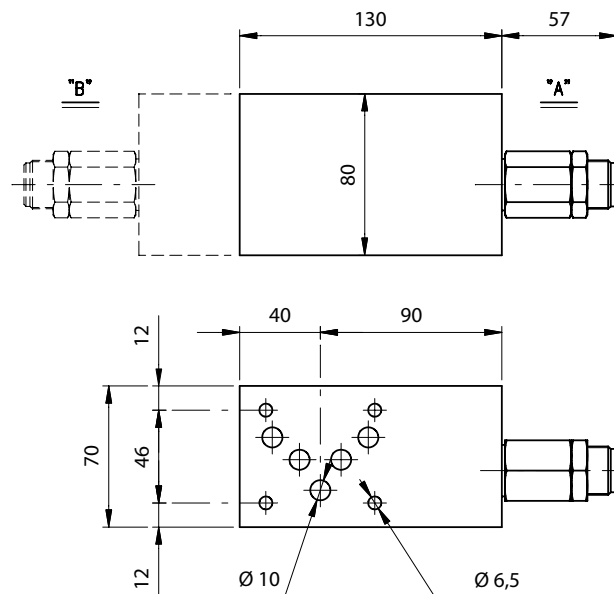


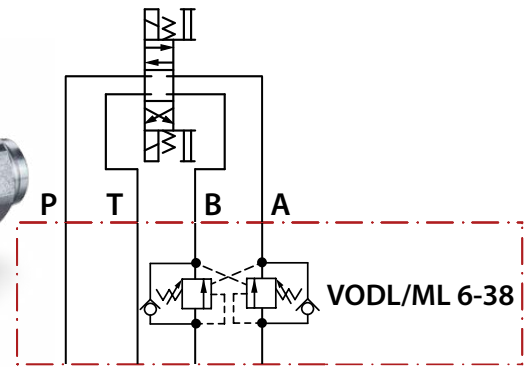
Druckverlust vs. Volumenstrom





Bestell-Nr.	Bezeichnung	Arbeitsleitung	Einstellbereich	Max. Arbeitsdruck	Material Körper
230-0960-2935	VOSL/ML 10-12A/TS.S.p7.PG	A	5 - 210bar	210bar	Alu
230-0960-2940	VOSL/ML 10-12A/TR.S.p7.PG		50 - 350bar		
230-0960-2945	VOSL/ML 10-12B/TS.S.p7.PG	B	5 - 210bar		
230-0960-2950	VOSL/ML 10-12B/TR.S.p7.PG		50 - 350bar		





Bestell-Nr.	Bezeichnung	Arbeitsleitung	Einstellbereich	Max. Arbeitsdruck	Material Körper
230-1030-3215	VODL/ML 10-12/TS.S.p7	A + B	5 - 210bar	210bar	Alu
230-1030-3220	VODL/ML 10-12/TR.S.p7		50 - 350bar		

